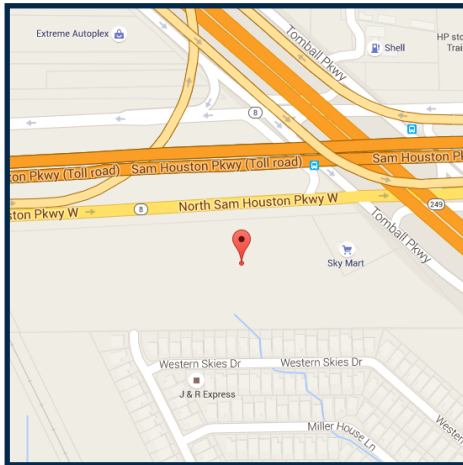


20,000 S.F. / 10 Ton Crane Ready/ Northwest Houston 15351 Tomball Pkwy - Houston, TX 77086



Property Description:

**20,000 SF/ 2,400 OFFICE SPACE / 10 TON CRANE READY/ 28' EAVE HEIGHT/ APPROX. 1.5 ACRES /
(1) 14'X16' & (3) 16'X16' GRADE LEVEL ROLL-UP DOORS
LOCATED BETWEEN BELTWAY 8 AND HWY 249**

Key Features:

- **TOTAL BLDG: 20,000 SF**
- **OFFICE SPACE 2,400 SF**
- **10 TON CRANE READY**
- **EAVE HEIGHT: 28'**
- **AMPLE YARD/OUTSIDE STORAGE SPACE**
- **(3) 16X16' GRADE LEVEL ROLL-UP DOORS**
- **EASY ACCESS TO BELTWAY 8 AND HWY 249**



**FOUR SEASONS DEVELOPMENT CO., INC.
FOUR SEASONS BUSINESS PARK**

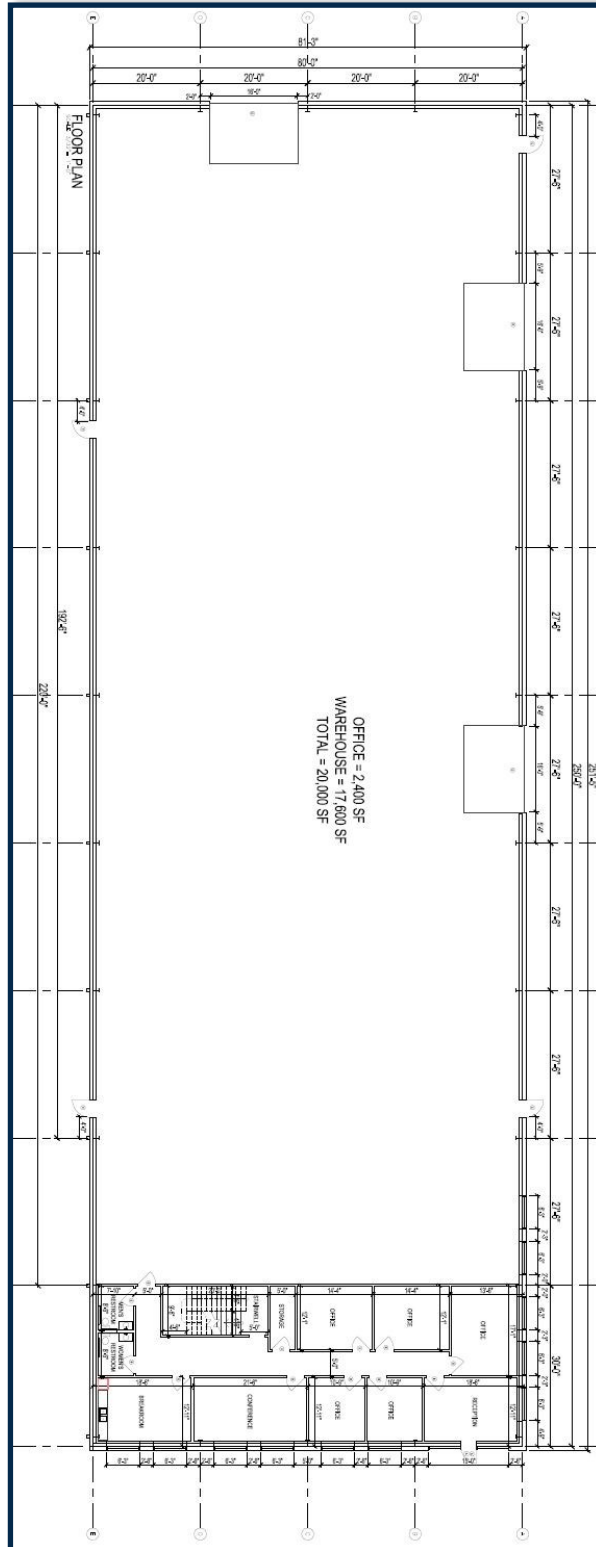
**5825 W Sam Houston Pkwy N
Houston, TX 77041**

P: 713-466-7077

F: 713-896-4775

www.fourseasonsdevelopmentco.com

20,000 S.F. / 10 Ton Crane Ready/ Northwest Houston 15351 Tomball Pkwy - Houston, TX 77086



***NO WARRANTY OR REPRESENTATION, EXPRESSED OR IMPLIED, IS MADE AS TO THE ACCURACY OF THE INFORMATION CONTAINED HEREIN AND SAME IS SUBMITTED SUBJECT TO ERRORS, OMMISIONS, CHANGE OF PRICES, RENTAL OR OTHER CONDITIONS.**