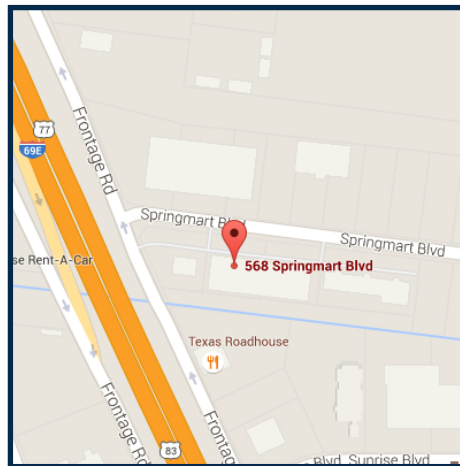


5,040 S.F. / Brownsville Area

568 Springmart Blvd. - (Suite 100) - Brownsville, TX 78246



Property Description:

**5,040 SF / MULTI-TENANT / BUILD-TO-SUIT / (1) 10' x 10' GRADE LEVEL ROLL-UP DOOR
16' EAVE HEIGHT / 3 PHASE ELECTRICAL POWER
LOCATED OFF US EXPRESSWAY 77**

Key Features:

- **TOTAL BLDG: 5,040 SF**
- **BUILD-TO-SUIT**
- **EAVE HEIGHT: 16'**
- **ELECTRICAL: 3 PHASE**
- **(1) 10' x 10' GRADE LEVEL ROLL-UP DOOR**
- **STUCCO AND STONE OFFICE FRONT**
- **EASY ACCESS TO US EXPRESSWAY 77**



**FOUR SEASONS DEVELOPMENT CO., INC.
FOUR SEASONS BUSINESS PARK**

**5825 W Sam Houston Pkwy N
Houston, TX 77041**

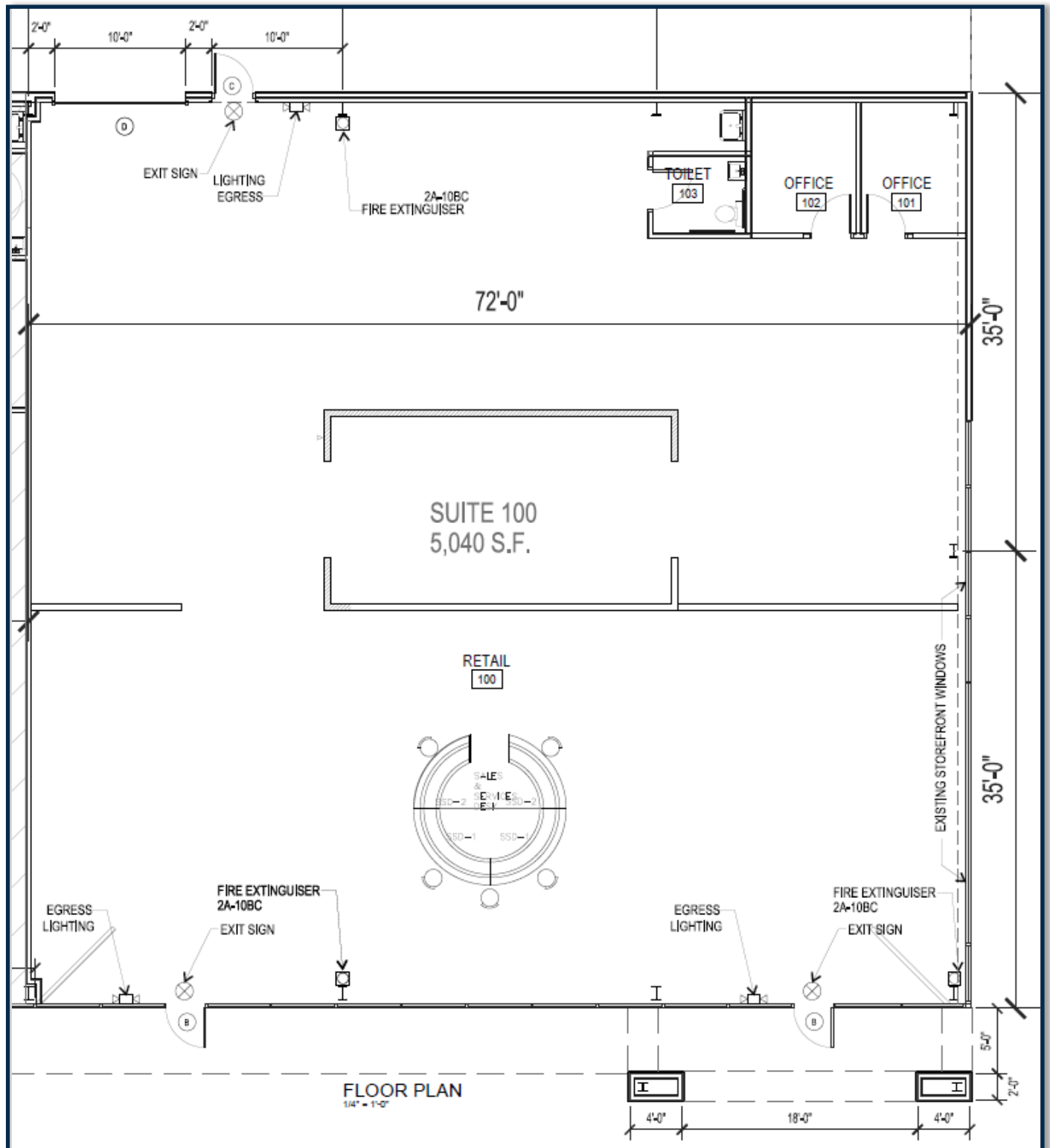
P: 713-466-7077

F: 713-896-4775

www.fourseasonsdevelopmentco.com

5,040 S.F. / Brownsville Area

568 Springmart Blvd. - (Suite 100) - Brownsville, TX 78246



***NO WARRANTY OR REPRESENTATION, EXPRESSED OR IMPLIED, IS MADE AS TO THE ACCURACY OF THE INFORMATION CONTAINED HEREIN AND SAME IS SUBMITTED SUBJECT TO ERRORS, OMMISIONS, CHANGE OF PRICES, RENTAL OR OTHER CONDITIONS.**